

High Speed Comprehensive Power Quality Analyser

Ranger Power Master 7000 (PM7000)

Three Phase, High Speed Power Quality Recording Analyser with Flicker and Harmonics available in Turbo, High Speed and Standard models



All your P.Q. needs in a single unit

A comprehensive high performance tool for all your P.Q. measurement requirements.

Set up your first recording in just 15 mins!

Wireless Communication

Bluetooth, **PMGateway** and **Ethernet** enable remote communications including data download to your inbox, visibility of live results and remote control of your PM7000.

Correct Data 1st Time

Our patented **Single Cycle Adaptive Store™** recording process provides single cycle measurements over long recording periods.

All the measurements you need first time out, without setting any thresholds!

Disturbances Ranked

Our **Auto-Ranking Waveform Capture** technique retains and ranks the waveforms of the 'worst' disturbances throughout the recording.

We take you straight to the core of your P.Q. problem.

Automatic measurements

No need to set thresholds! Our intelligent data handling technique, the patented **Adaptive Store**, and our **Auto-Ranking Waveform Capture** selectively retain detail when the 'worst' disturbances occur during your recording. The PM7000 will save you time and money when you solve your P.Q. problems more quickly than ever before.

Do not miss anything during your first recording

- Up to 1000 channels reporting to the Standards
- 32 troubleshooting channels with single cycle detail
- 8 channels for Waveform Capture, at High Speed over 1 Ms/sec (24576 samples per cycle at 50Hz per channel, Turbo model).
- All channels recorded simultaneously

RMS accuracy 0.1% excluding sensors*

- Individual voltage and current **Harmonics** to the **127th**, %THD to the 100th and Interharmonics.
- Instantaneous **Flicker** sensation, short term and long term Flicker to IEC61000-4-15
- **Power parameters, unbalance, phase angle, frequency, inrush current** and much more.

Expect safety as standard

The PM7000 is a Cat IV 600V Power Quality Analyser, powered off the voltage being measured.

Multiple modes of direct & remote comms

Great choice of communication methods to suit any situation. Choose from USB, Bluetooth, Ethernet, PMGateway and USB memory stick connectivity.

The PM7000 is easy to use

Our Hook-up Checklist, Configuration Guide and Step-by step Quick Start Guide all make setting up and using your PM7000 quick and simple.

Measures to ENA Recommendation G5/5

Water resistance to IP65

Technical help: support@outtramresearch.co.uk - +44 (0)1243 573050
Sales enquiries: sales@outtramresearch.co.uk - +44 (0)1243 573050

Ranger PRODUCTS

designed and manufactured
in the UK by



27/04/2023

www.outtramresearch.co.uk +44 (0)1243 573050

High Speed Comprehensive Power Quality Analyser

PM7000

Interharmonics, Harmonics to the 127th
& Fast Frequency options available



In short, we are very happy with the [Outram PM7000], and glad we found each other. Really because it does things and finds things which other kit doesn't touch! The "detailed recording" channels, and the ability to relate different channels, makes it ideal for answering questions like "what happened and why?"

R. Ball, National Grid UK.

Records 32 channels simultaneously with single cycle resolution on disturbances due to our exclusive, patented Single Cycle Adaptive Store™. Can record ≥ a year using this method.

Records > 470 channels of general parameters in 10 minute (or user specified: 1 sec to 2 hr) increments. (Extra harmonics optional)

Routine measurements, troubleshooting & high speed waveform capture all recorded simultaneously.

Auto-ranking Waveform Capture means time taken to analyse data is greatly reduced.

Waveforms recorded include transients, sags, surges, notches, rings, THD and TH current.

Extended Waveform Capture can record disturbance waveforms for up to 60 secs.

Gives unprecedented detail due to superior sampling speeds.

Reports to the Standards inc. EREC G5/5.

G5/4 Harmonics surveys automatically generated in companion Software, Pronto.

Virtually unlimited memory and zero download time! The unit can automatically download data after each recording session to USB stick. Record for weeks at a time.

The first analyser to include the required Instantaneous Flicker Sensation output. Provides authoritative Flicker measurements to IEC61000-4-15.

Harmonic Direction shows if Harmonics are upstream or downstream of the point of measurement. Also measures individual Harmonics and THD to the 50th. Interharmonics and individual harmonics to the 127th are optional.

Over 200 MB of on-board data storage plus USB Flash.



Comes with 12 pre-stored configurations. Just choose one using your portable device or PC, or program your own with the included software, PMScreen.

Stores up to 200 configurations on board. Eliminates the need to program on site. Just choose a configuration, press Load and Start.

Phasor Diagram Display ensures correct hook up and shows the phase relationship of individual harmonics, NOT just the fundamental.

On-screen HELP guides users through configuration and hook up.

Memory Expansion Port.

Sampling rate:

PM7000 384 samples / cycle @ 50 Hz

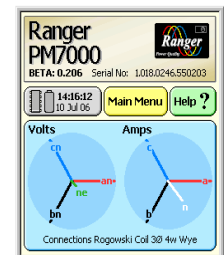
PM7000H 3072 samples / cycle @ 50 Hz

PM7000T 24576 samples / cycle @ 50 Hz.

Records automatically at 50 or 60Hz.

The Cat IV 600V Phase A powered unit comes with our comprehensive, straight forward, analysis software, Pronto for Windows, at no extra cost.

Dual frequency measurement (optional) enables independent, higher resolution (0.001Hz) frequency measurement on V4 suitable for Firm Frequency Response (FFR) commissioning.



Tablet or mobile phone included with every unit, showing via PMScreen:

- Analyser status,
- Live screens for waveforms,
- Harmonics,
- Interharmonics,
- Trends,
- Disturbance Incidents
 - 3D Bar Graph,
 - ITIC (CBEMA),
 - Severity Duration v Time,
- Phasor diagrams & many more.

High Speed Comprehensive Power Quality Analyser

PM7000 Kit

- Ranger PM7000 Power Quality Analyser
- Four 24" 6000 Amp Flexible Current Clamps (max conductor size 8"), braided
- Five Voltage Probes 600V Cat IV (1000V Cat III), braided, with 5 Voltage Extension Leads
- Three Neutral Common Leads
- Mains Lead and USB Lead
- USB Memory stick for additional memory storage
- Pronto for Windows Analysis Software
- Customer CD with Operation Manual
- Hook-up Checklist and Configuration Guide



- Android Tablet /Mobile Phone
- Customised Bag

Single Cycle Adaptive Store™

"Starting from scratch we would have spent weeks zeroing in on something like this on a conventional recorder, but the PM7000 caught it on the first try, with no special setup"

Pat Coleman, Southern Company, USA.

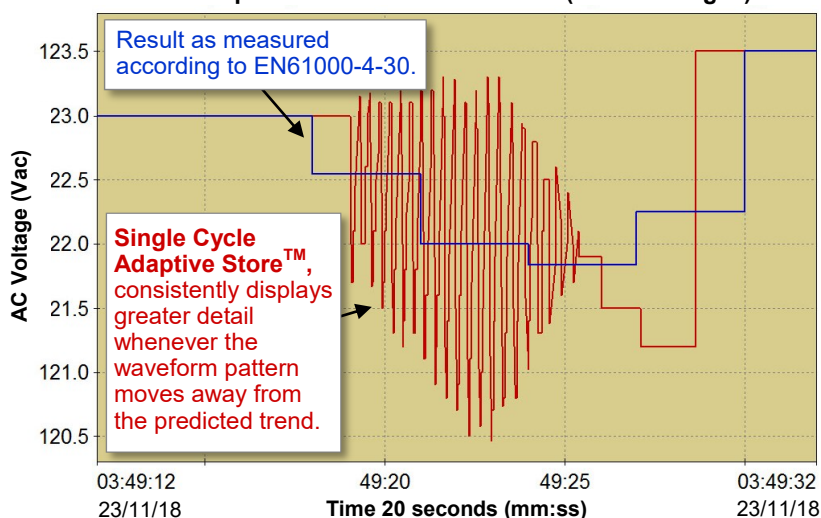
Adaptive Store is our patented compression technology available in all PM Series Analysers. It automatically records the chosen parameters in great detail and at high sampling rates when anomalies and deviations from the predicted trend occur.

Adaptive Store is designed to make the best use of available memory, whilst meeting two conflicting requirements:

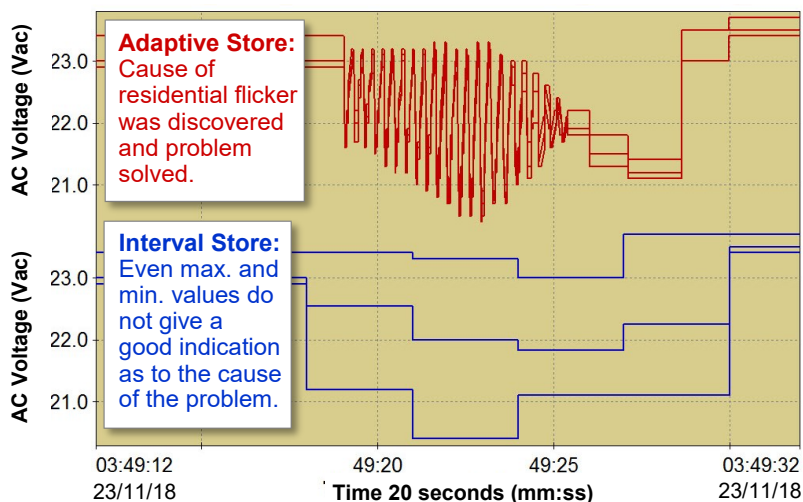
- to provide long-term trend data, observing the worst extremes of max and min values, and;
- to provide detail where new activity occurs, i.e., detecting and capturing sudden changes.

Adaptive Store assesses signal conditions in real time without having to set thresholds. The only required user parameter is the total time of the recording.

Outram's Adaptive Store vs. Interval Store (3 sec averages) of Van



Max, Min and Average of Van: Adaptive Store vs. Interval Store



Adaptive Store recognises the unpredictability of future signal activity

This unique method of *anticipating* the possible signal path has many advantages. For example:

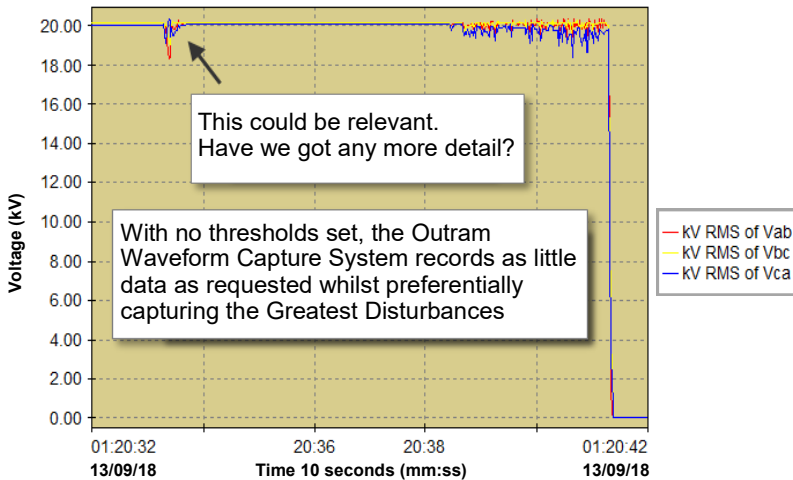
- it allows for immediate reaction to transients capturing the entire duration of the disturbance, and;
- it works with extremely long recording periods.

By automatically adjusting the thresholds distinguishing the anomalies from the trend as signal dynamics change or the available memory becomes full, Adaptive Store ensures that less significant phenomena can be summarised and greater detail recorded for abnormal behaviour.

The Single Cycle Adaptive Store™ recording mode is the most powerful automatic data compression system available in any data logger on the market.

Auto-Ranking Waveform Capture

Voltage transient occurs 8 secs before voltage collapse



Outram's Autoranking Waveform Capture is designed to manage the high speed waveform data measured by the PM7000.

It tracks and ranks multiple categories of sub-cycle transient and other problem event types, such as sags, surges, notches and rings. It then discards smaller events when larger ones occur.

This automatic real time data management process has these advantages:

- It fills the allocated memory at the start of a recording with anything the analyser sees, then discards the least interesting disturbances, as more 'exciting' ones come along.
- It captures the best, most revealing events without any prior knowledge of what might happen. **Setting thresholds is not necessary.**

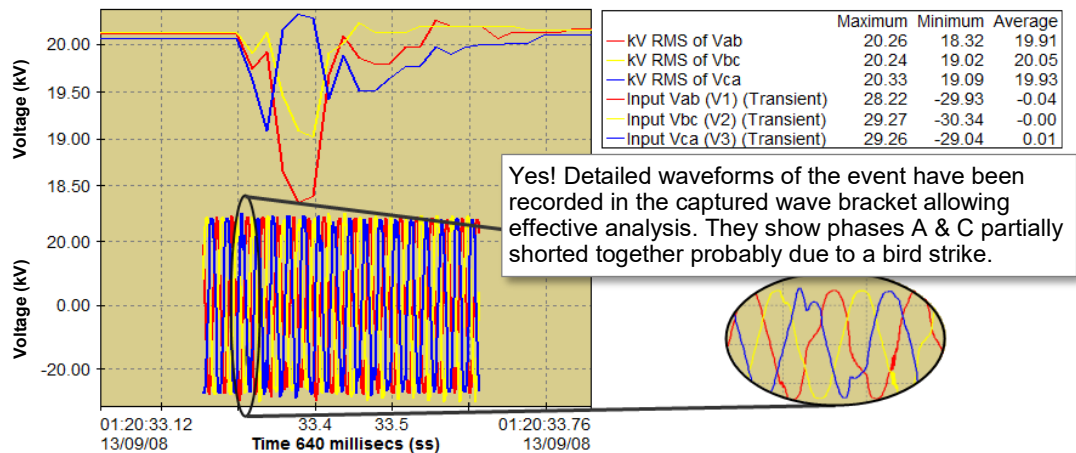
- It increases the quality of data at the same time as reducing volume, consequently speeding up download time as well as making data review easier.

- It works equally well over short and long recording periods.

- It is continuously re-triggerable and does not require re-arming.

The waveforms captured are normally up to 2 cycles before the event and up to 5 cycles after. However, captures may be extended up to 60 seconds after the event with different extensions for individual triggers.

Voltage transient occurs 8 secs before voltage collapse



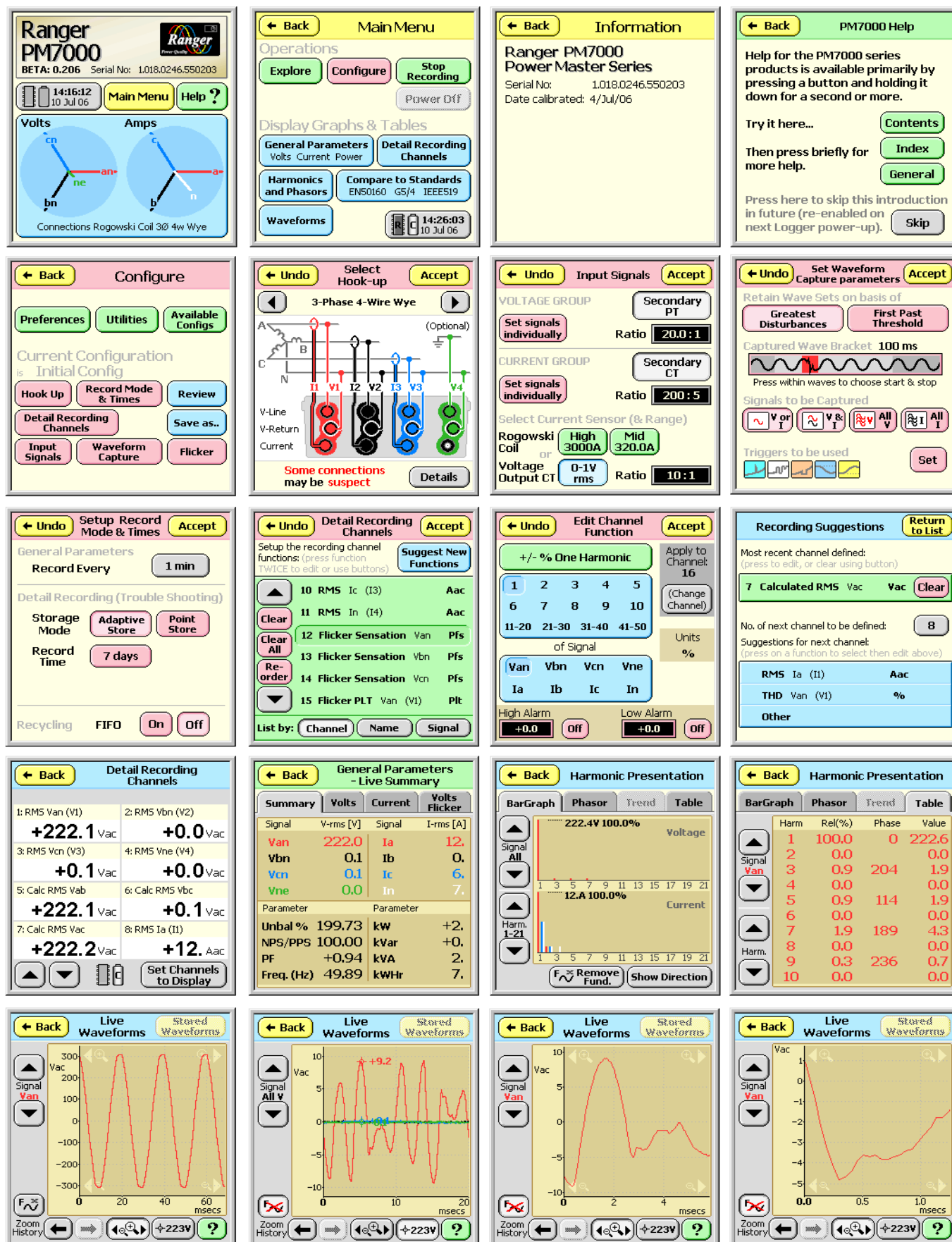
Use the PM7000 to measure any **LOW VOLTAGE** supply, including the mains supply...



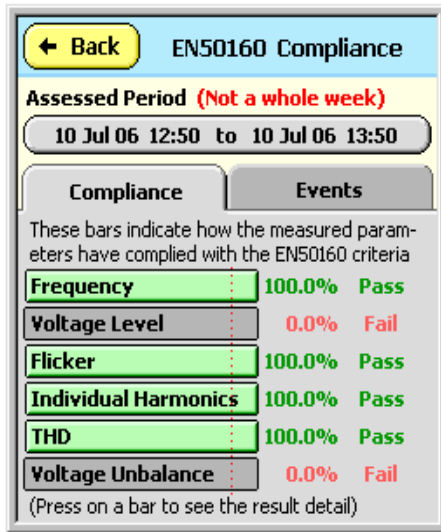
...or **HIGH VOLTAGE**, up to 400kV, through secondary transformers.

High Speed Comprehensive Power Quality Analyser

Example Screens of the Ranger PM7000



PMScreen example screens cont.



Screen a)



Screen b)

Compare vs. the standards

Recorded results may be compared against various standards, for example EN50160, the European Public Voltage Supply Characteristic.

The screens here show examples of Screen a) the summaries for compliance of the supply during the assessed period, and Screen b) the number of specific events.

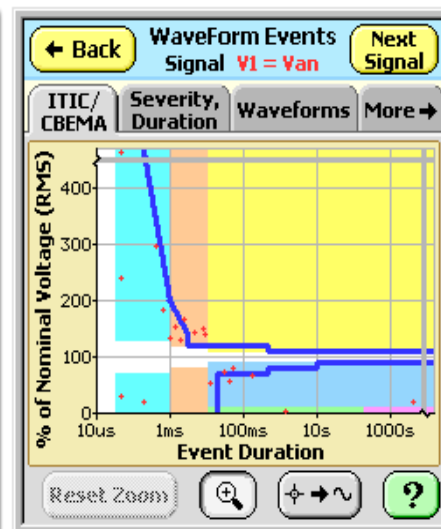
For both of these screens the assessment period can be adjusted.

View data in multiple forms

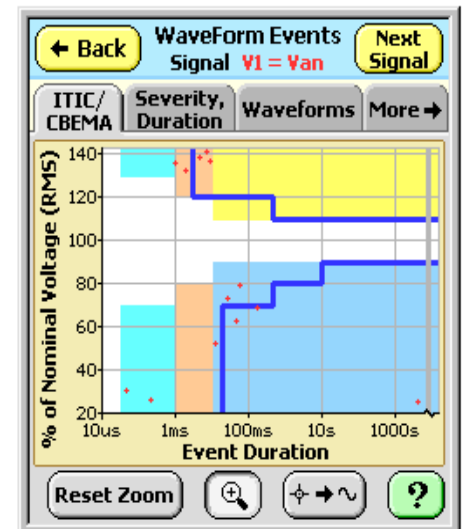
ITIC (CBEMA) Curve

The screens to the right and below show different ways of presenting recorded event data, Screen c) is the conventional ITIC (CBEMA) presentation. This graph can be zoomed (d) to distinguish elements of a cluster, then the relevant waveform can be displayed.

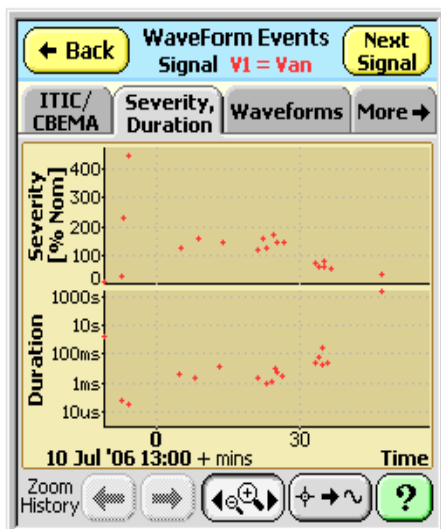
A CBEMA curve can also be created in the companion software to the Ranger products, Pronto for Windows.



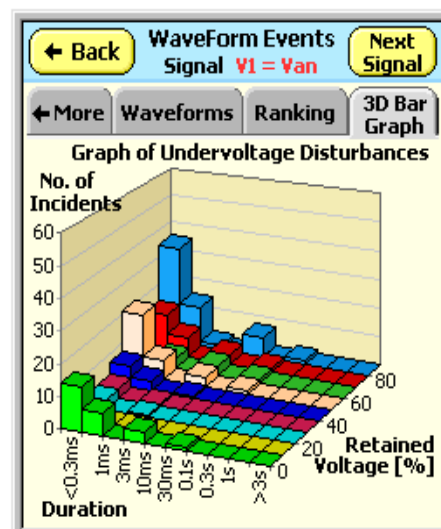
Screen c)



Screen d)



Screen e)



Screen f)

Severity / Duration Curve

Screen e) shows event severity and duration against time for the recording. This too can be zoomed in.

3D Undervoltage Disturbance Graph

Screen f), the 3D Undervoltage Disturbance Graph, shows how serious the supply disruptions have been in terms of an industrial process being disturbed.

Remember that sags/dips may effect processes more seriously than complete outages.

High Speed Comprehensive Power Quality Analyser

Exclusive Software, Pronto for Windows



How to make the most of all your recorded data:

Use our **Pronto for Windows Software**, the best graphing software on the market for use with all PM Analysers

STANDARD REPORTS

Generate graphs and tables suitable for EN50160 reports.

UPSTREAM OR DOWNSTREAM?

Our Adaptive Store recording regime can deliver enough detail to indicate whether a disturbance is coming from upstream or downstream of where the measurement was taken. Work it out by looking at the relationship between the voltage and current data streams.

COMPARE LIKE WITH LIKE?

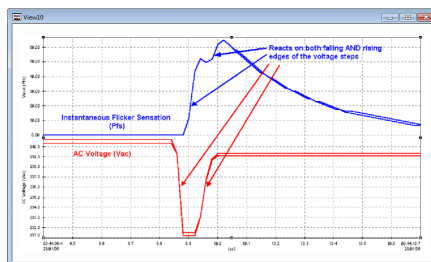
From your own recorded data in Pronto you can load the same configuration back into the analyser to record the same measurements again and again.

TECHNICAL SUPPORT

Technical support is available from those who either designed the unit or have over 20 yrs experience with the Ranger and PM series.

Who better to instruct you on how to make the most of your analyser?

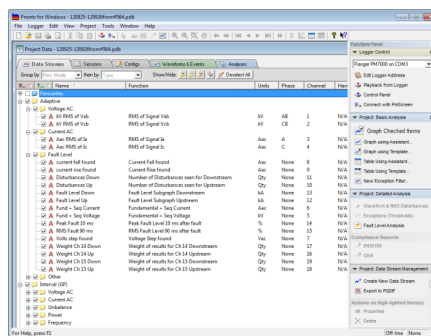
Pronto for Windows is a full-featured, Windows based program designed to extract data from the Power Master series and present it either graphically or in tables for straightforward analysis.



Analyse detailed data that Single Cycle Adaptive Store™ has captured automatically

Pronto for Windows is the only program you will need to communicate, analyse, report, and manage your data (as well as configure the analyser itself).

Through the use of easy to follow 'assistants' and pre-loaded templates, create graphs and tables for emails and hard copy reports simply and quickly. Manage and save your favourites to create the same graphs recording after recording.



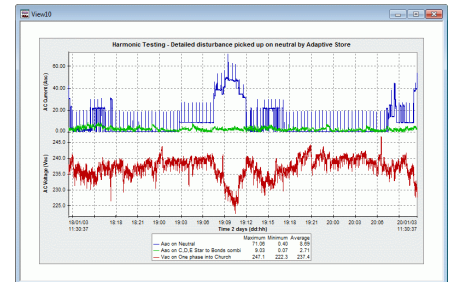
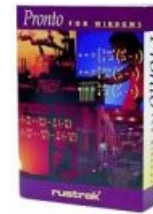
Pronto for Windows Project Browser

The selection of icons on the toolbar makes all commonly used instructions such as zooming, statistical analysis, annotation, downloading, and printing as easy as pointing and clicking the mouse.

Simply 'copy & paste' graphs into any word processing program and export tables straight to Excel or PQDIF for further analysis.

Sales enquiries: sales@outramresearch.co.uk
+44 (0)1243 573050

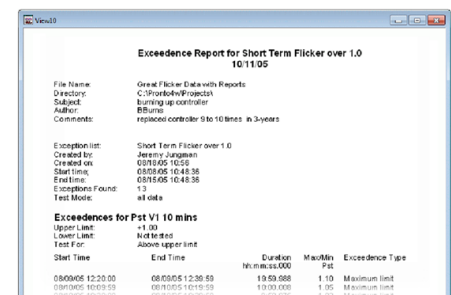
Technical help: support@outramresearch.co.uk
+44 (0)1243 573050



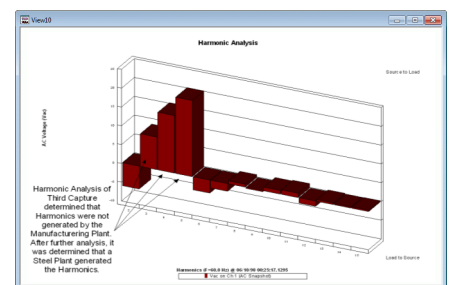
Sample Graphical Data of Voltage & Current

More Pronto Features:

- Analyser configuration is saved with data for retrieval any time
- Easy file management tools
- Watch our New video tutorials on-line
- Reporting Tools:
 - Automatically generated G5/4 Harmonics Survey reports
 - Exceedence reports
 - Summary statistics
 - Tabular Listings
 - Custom Reports saved as templates



- Unlimited traces on a screen
- Arrange traces on any axis, full freedom of editing on all aspects of a graph
- A comprehensive, context-sensitive help system



Harmonic Analysis of Waveform Events (PM7000, PM7000FLM and PM7500 series only)

Ranger PM7000S, PM7000H, PM7000T Specification

Input Voltage: 4 input channels. Cat IV 0-600Vac or Cat III 0-1000Vac (if internal AC power supply disconnected).
Sensors: Fused voltage leads with dolphin clips connected using in-line shrouded 4mm banana sockets.

Input Current: 4 input channels.
Sensors: Two ranges on two types. Menu selectable Rogowski Coil 0-6000A, 0-400.0A, 24inch (standard), 36inch, 48inch diameter and custom sizes available or Voltage Type Low Current Transducers 0-1 Vac. Safety BNC Socket. Phase reversal in software.

Five distinct simultaneous Recording Systems:

Waveform capture: High speed sampling on all inputs.

Troubleshooting: Utilising the patented Single Cycle Adaptive Store™ to capture comprehensive detail over long recording periods on up to 32 selected parameters.

General Parameter Analysis / Trends: > 470 (1073 optional) parameters recorded automatically and simultaneously enabling reporting to recognised Standards including ENA EREC G5/5. Measurements are without gaps for the entire recording session.

RMS Event Database: Automatic recording of nominal power quality events: sags, surges and interruptions.

Fault Level (optional): ½ cycle Peak Fault Level, RMS Break Fault Level at 50-100ms and ½ cycle Downstream Motor Contribution. Fault Level available in kA or MVA in Pronto for Windows software.

Configurations: Space for over 200 files. These may be used to store configurations or recording sessions.

Accuracy*: 0.2%. 0.1% in reference range 20-30°C (excluding sensors). +/-2LSB.

IEC 61000-4-30 Class A: Designed to meet the accuracy requirements of IEC 61000-4-30 Class A. To avoid generating a discontinuity in 10-12 cycle data at the 10 minute clock tick as prescribed by IEC 61000-4-30 (Clause 4.4 *Measurement aggregation over time intervals*) the PM7000 employs a frequency based 10-12 cycle aggregation process synchronised to real time. This method ensures correct reporting of a single power system disturbance occurring at the 10 minute clock tick.

Fault Level measurement accuracy is dependent on quality and quantity of disturbances seen and measurement point chosen; typically better than 3% when given numerous, abrupt voltage disturbances of >0.5% on a stable, radial network.

Resolution: Programmable to 0.1 Vac and 0.1 Aac, 0.01V high resolution mode. Frequency to 0.001Hz (optional).

Fault Level current resolution 0.01kA in real time display and in analysis software.

Real Time Clock Uncertainty: Complies with IEC 61000-4-30 Class A (with GPS option)

Troubleshooting (Adaptive Store) Measurement Parameters:

	AC Single Phase Installation	AC 2 (split) Phase Installation	AC 3 Phase Installation (Delta, Wye & variants)
RMS, V and I	Y	Y	Y
Stray Voltage RMS Hi Res < 35V	Y (L-N, L-L where appropriate).	Y	Y
Real power W	Y	Y	Y
Reactive Power VARS	Y	Y	Y
Apparent Power VA	Y	Y	Y
Power Factor PF	Y	Y	Y
Displacement Power Factor	Y	Y	Y
Phase Angle	Y	Y	Y
Frequency	Y	Y	Y
Instantaneous Flicker Sensation	Y	Y	Y
Flicker Short Term (Pst) (selectable, default 10mins)	Y	Y	Y
Flicker Long Term (Plt) (selectable, default 2hrs)	Y	Y	Y
Flicker Flag	Y	Y	Y
Distortion Power	Y	Y	Y
Voltage Unbalance, (Conventional & Symmetrical Components)			Y
Current Unbalance			Y
Positive Sequence Fundamental Real & Reactive Power (IEEE1459)			Y
Harmonics:			
Total Harmonic Distortion % and value, V and I	Y	Y	Y
Individual Harmonics value and % to the 50th, V and I	Y	Y	Y
Individual Harmonics value and % to the 127th, V and I (optional).	Y	Y	Y
Interharmonics and Sub groups to the 127th, V (optional).	Y	Y	Y
Odds, V and I	Y	Y	Y
Evens, V and I	Y	Y	Y
Triplens, V and I	Y	Y	Y
Harmonic Direction	Y	Y	Y
K Factor	Y	Y	Y
Channel X * Constant	Y	Y	Y
Channel X / Channel Y	Y	Y	Y
Filtered Channel X	Y	Y	Y
Internal Temperature	Y	Y	Y
On Charge	Y	Y	Y
Battery Volts	Y	Y	Y

Symmetrical (Sequential) Components:

Positive, negative, zero sequence:

NPS, NPS/PPS (Voltage and Current), ZPS, ZPS/PPS (Voltage).

Ranger PM7000S, PM7000H, PM7000T Specification cont.

General Parameter (Trend) measurement: Records up to 470 parameters automatically or 1073 (optional) using RMS samples updated every ½ cycle. These are fixed functions recorded at 1 of 14 selectable intervals between 1 sec up to 2 hours:

- Voltage & Current RMS (Max, Min, Avg)
- THD V / Total Harmonic Current (% and Value) to IEC 61000-4-7 and IEC 61000-4-30 Class A (8 inputs)
- Flicker to IEC 61000-4-15 and IEC 61000-4-30 Class A (3 Voltage inputs)
- Power (kW, VAR, AP, PF)
- Harmonics to IEC 61000-4-7 and IEC 61000-4-30 Class A:
 - Individual Harmonics 1-50th (8*50 signals on Volts and Current) or (optional) 1-100th (6*100 and 2*50) on Volts and Current,
 - Interharmonics 55-95Hz in 5Hz bandwidths to IEC 61000-4-7 and IEC 61000-4-30 Class A on 3 Voltage channels (optional)
 - Interharmonic sub-groups 2-99 to IEC 61000-4-7 and IEC 61000-4-30 Class A on 3 Voltage channels (optional)
 - Unbalance
 - Frequency

Waveform Capture: Sample rate from 19.2s/s (384 samples / cycle @ 50Hz, 320 samples / cycle @ 60Hz) up to 1.2288 Ms/s in the PM7000T (~ 24,576 samples/cycle at 50 Hz, 20,466 samples / cycle @ 60Hz) on 8 channels. Auto-Ranking Waveform Capture - Events automatically examined, **ranked** & stored in real time, no thresholds need to be set.

Selectable waveform parameters:

Wave Retention Basis: Greatest disturbances (automatic ranking and low rank discard) or first past a threshold.

Capture wave bracket: Wave Sets: from 20ms up to 60secs. Can be contiguous; no re-arming.

Signals to be captured: offending wave with complementary current or voltage, All Voltages, All Currents.

Triggers to be used: Transient, Ring, Notch, Sag, Surge, THD Volts, THD Current.

Wave Allocation: Waves allocated across trigger functions (number and trigger selectable).

Sampling:

PM7000S (Standard) 19.2k Samples per sec
PM7000H (High speed) 153.6k Samples per sec
PM7000T (Turbo) 1,228.8k Samples per sec

Frequency:

Automatic frequency tracking in 50 or 60Hz regions. Normal range 45-65Hz (can track down to 10Hz).

Dual /Fast Frequency (Optional): Independent frequency variation measurement on V4. Resolution to 0.001Hz (frequency), single cycle (time), latency ~3 cycles. FFR (V4) measurement range 40-70Hz.

Memory: 128MB Flash (long term) memory for all files. 32MB RAM (temporary) for high speed waveform capture data, 64MB working RAM. Expansion with USB memory device (size limit of 128GB) which can be removed and reinserted whilst recording is in progress. Automatic download to USB memory device .

Firmware (program memory) - Flash upgradeable 2MB

User Preferences - Stored in non-volatile Flash Memory.

Portable Device Requirements for PMScreen and PMGateway: Android or Windows compatible.

Data Retention: During recording sequential data is saved to internal Flash memory. Waveform capture data is held in RAM and transferred to Flash memory when recording ends. Configurations and user settings stored in Flash memory.

User Interface via remote screen: PC via Bluetooth or USB running PMScreen, or tablet/mobile phone (provided) via Bluetooth running PMScreen. Setup/Configuration and Data Review via remote screen. Data analysis using Pronto for Windows.

Displays On PMScreen: Power & Energy, Waveforms, Harmonics, Phasors, Harmonic Phasors, Trends, Statistics, List of Channels. Comparison to Standards. Interharmonics (optional).

Communications:

Bluetooth: Wireless interface (isolated).

Remote Communication over PMGateway App.: Enables Android mobile phone to act as a Gateway (Over Wifi or Bluetooth). Use PMGateway to send data files to preferred email address or Dropbox and start and stop recordings.

USB: Memory device interface (non-isolated).

USB: Serial interface to PC (isolated > 2.5kV) download to PC & control through Pronto for Windows.

Ethernet: Connectivity through local network. Download to PC. Compatible with iHost.

Protocol: MODBUS ASCII.

Power: Powers from a) the voltage measurement (106-600 VAC RMS 15 W Max from Phase A, 40 - 64Hz) and b) if AC supply not available or desirable for charging, from a separate power supply at 12V DC, 6W.

Burden: Normally <10 VA from Phase A. If a charger is used the Power Supply is automatically disconnected from Phase A.

Voltage Measurement Channel Input Impedance:

≥32MΩ per phase except A Phase when used as power source.

Battery Capacity: 2100mAh (5 HI-Temp NiMH batteries).

Battery Ride Through: Ten minutes at a time. If power is lost (from Phase A or through the charger), the unit continues recording for 10 minutes before shutting itself down. The unit immediately wakes up and continues to record if power is returned before the recording end time is reached. If in FIFO mode, the unit wakes up whenever power is restored and continues to record in the same cycle as previously set up.

Charge Method: From V1 input or from 12V Wall Charger (auto switching).

A/D Converters, 2 sets : (i) 24 bit at 19.2 kSps, top 16 bits used normally for harmonics, power & energy, Flicker. (ii) 12 bits for High Speed and Turbo only.

Measurement & Reporting Standards: IEC 61000-4-15, IEC 61000-4-7, IEC 61000-4-30 Class A, IEEE1453 (Flicker), IEEE1459, IEEE100, Report to EN50160, EREC G5/4, IEEE 519, Full data set to EREC G5/5, P29

High Speed Comprehensive Power Quality Analyser

Ranger PM7000S, PM7000H, PM7000T Specification cont.

Safety Standards: IEC 61010, (600v Cat. IV, pollution level 2, 1000V CAT III if PSU fuses removed), CE Fused voltage leads (lead fuses 500mA, 700V, 50kA rupture current), IEC 61326 (EMC).

Internal fusing: PSU (x2), Charger input, Battery stack, Internal Thermal Switch (x2).

Computer Requirements for Pronto Software: Windows Vista, 7, 8, 10, 11; 250MB hard drive space.

Case: Pelican 1150 Guard Box: Dimensions. 22.9 x 19.1 x 11.0cm.

Weight: 3.5 kg. without leads and clamps.

Operating Temp: -20°C (-4° F) to 60°C (140° F).

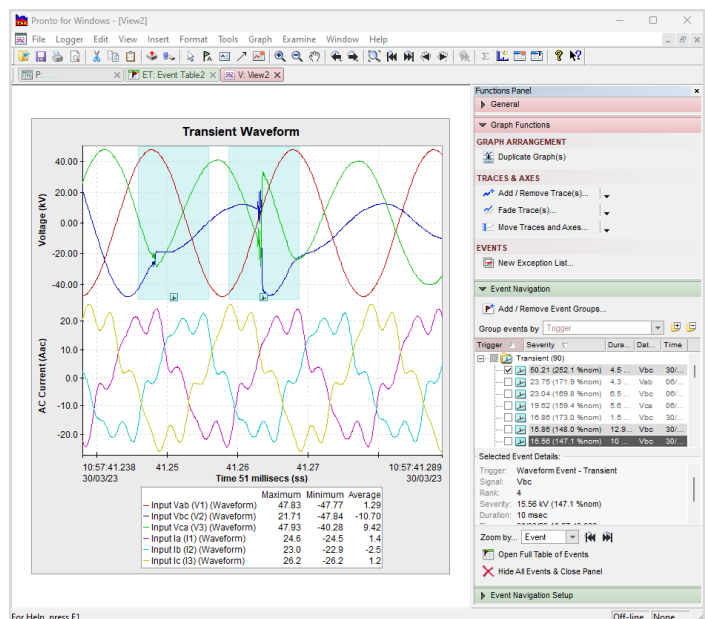
Environmental: IP65. Main unit will tolerate momentary emersion when lid sealed. Leads and their connections are not watertight and for safety reasons we strongly recommend that the operator does not connect and disconnect the unit in wet environments.

Applicable Patents: 6424277, 0230712, 4910692.

Data Analysis Software, Pronto for Windows Top Features:

- Create graphs and tables of data with 100s of flexibility options.
- Accommodate multiple different parameters on the same graph for comparison, zooming in and out of a graph down to single cycle and beyond.
- Add and remove traces from a single graph, separate them out and move the axes around.
- Create exception filters/ lists for values over and/or under any threshold(s),
- Rank waveforms,
- Create graphs and tables through saved templates,
- Fade traces to easily compare many traces on the same graph.
- Create ITIC curve graphs,
- Copy and paste graphs into MS Word,

- Easily export using Excel, CSV and PQDif ,
- View multiple sessions and projects together on the same graphs, including data from other Outram Power Quality equipment
- Create Harmonics graphs and tables for specific events including 95th and 5th percentiles (other percentiles selectable),
- Harmonic Analysis of captured waveforms
- Portray Fault Level results in both 3D and 2D formats for analysis
- Create a G5/4 or IEEE519 report with a few clicks,
- Create averages (e.g. 10min) of all measured parameters (average value selectable)
- Save configurations from previous recordings and upload into a different analyser (same model)
- Perform single and dual cursor examine functions on graphs
- No software dongle or USB key required



DELVING INTO THE DETAIL

Single Cycle Adaptive Store™ records more detail when the measurement deviates from the predicted trend.

This PM series EXCLUSIVE storage technique means only the necessary information is captured in detail making the most of the unit memory and reducing analysis time.

FIND THE SOLUTION

You think troubleshooting Power Quality is like looking for a needle in a haystack?

Do you need to find solutions quickly?

Do not leave it to chance.

Use an **Outram PM7000**.



AVAILABLE FOR HIRE

All of our PM series Analysers are available for hire. Try one out today.

For more information on any of our products or services please contact us:

by phone on 01243 573050,

by email at sales@outramresearch.co.uk

or visit us on the web at www.outramresearch.co.uk

3 Phase Power Quality Analyser with Flicker & Harmonics

Ranger Power Master 3000HF (PM3000HF)

Three Phase Power Quality Recording Analyser with Flicker and Harmonics



Take Control of your PQ Measurements Today

- Are your machines deteriorating due to poor power quality?
- Can you save money distributing your load?
- Are you wasting energy?
- Find out...and much more with the PM3000.

Wireless Communication

Manage your PM3000 remotely.

Bluetooth and our new **PMGateway App.** enable remote communications including data download to your inbox, visibility of live results and remote control of your PM3000.

Correct Data First Time

Our patented **Single Cycle Adaptive Store™** recording process provides single cycle measurements over long recording periods.

All the measurements you need first time out, without setting any thresholds!

The PM3000HF...is for everyday use

A 3 phase power quality analyser with a user-friendly, graphical touch screen provides you with all the information you need to get the answers to your power quality problems.

...gives detail in your recordings where you need it

Record detail down to a single cycle whenever a disturbance occurs, without setting any thresholds, with our unique data storage technique **Single Cycle Adaptive Store™**. Record this detail up to 2 months with our Memory Extension to 32MB.

...records 16 Channels, from >100 measurements

The PM3000 records and displays up to 16 detailed channels simultaneously. Choose from voltage (AC/DC), current (AC/DC), power, power factor, VAR's, phase angle, frequency, unbalance, THD, and much more. The PM3000 can measure 100s of individual parameters.

...is easy to set-up, you don't have to set thresholds

Setting up is easy. Simply use it as a meter or download recordings to your PC for further analysis.

For more information on the PM3000HF, including a full technical specification, download its datasheet from <https://www.outramresearch.co.uk/assets/pm3000hf.pdf>

Highly Accurate

- **Individual Harmonics** to the 15th, %THD to the 25th.
- **Instantaneous Flicker** sensation, short term and long term Flicker to IEC61000-4-15
- **Power Parameters, Unbalance, Phase Angle, Frequency, inrush current** and much more.

Ranger PRODUCTS

designed and manufactured
in the UK by



Ranger Power Master 1000



Use the Right Tool for the Job

The PM1000F is a single phase, power quality troubleshooting tool with Flicker measurements to IEC61000-4-15, including Instantaneous Flicker Sensation

Simply plug it in and play

The PM1000 will begin recording without requiring any user skill.

Wireless Communication

Bluetooth to phone, tablet or PC as well as remote data download, live results and remote control of your analyser via our **PMGateway App**.

Correct Data First Time

Our patented **Single Cycle Adaptive Store™** recording process provides single cycle measurements over long recording periods.

All the measurements you need first time out, without setting any thresholds!

Detail in your recordings where you need it

Record detail down to a single cycle whenever a disturbance occurs using our unique data storage technique Single Cycle Adaptive Store™. It's automatic, no need to set thresholds.

Straight forward communication

A virtual user interface on your PC or portable device allows you to set the PM1000F up and see real time data without it needing a display. Talk to your PM1000F via Bluetooth using an Android tablet or mobile phone and to your PC via USB-C.

Simple Analysis

Adaptive Store, combined with our comprehensive data analysis software, Pronto for Windows, enables you to analyse your data with speed and confidence, zooming in easily on the readings that matter.

What makes using the PM1000F so easy to use?

- Up to 16 channels of recorded information in the same session enables you to get all the information you want first time.
- Three flashing red/green LEDs give status information when the PM1000 is recording so you can check all is in order with no fuss.
- On screen 'Help' guides you through setting up so you can get it right first time.
- The PM1000 comes with 13 configurations for single phase hook ups already stored so you can get started with confidence.
- You can store up to 127 configurations or data files in the PM1000 so you only have to create each of your unique set ups once. The logger remembers them for your future use saving you much time and effort.
- Set ups can be programmed in on-site for your convenience.
- Compact and light, the PM1000 comes with a protective case and specifically designed bag to make carrying it around easy.

Parameters Measured

- ~ Voltage
- ~ Current
- ~ Stray voltage Hi Res <35V
- ~ Real Power
- ~ Reactive Power
- ~ Power Factor
- ~ Apparent Power
- ~ Phase Angle
- ~ Frequency
- ~ Total Harmonic Value
- ~ Total Harmonic Distortion
- ~ Flicker
- ~ Inrush Current (automatic)

Ranger PRODUCTS

designed and manufactured
in the UK by



For more information on the PM1000F, including a full technical specification,
12 download its datasheet from <https://www.outramresearch.co.uk/assets/pm1000.pdf>

**Did you know you can now predict Prospective
Fault Level from measurements on the network
with our new
PM7000 Fault Level Monitor?**



Power Quality Monitoring and Analysis

Outram Research Ltd
Power Quality Troubleshooting and Fault Level Monitoring
Tel: +44(0) 1243 573050
Email: sales@outramresearch.co.uk
www.outramresearch.co.uk

High Speed Comprehensive Power Quality Analyser